



BOWLS

W E A R



National Supplier of Bowls Wear

WELCOME

WHY USE CKL...?

GREAT PRODUCT RANGE

CKL not only provides great quality bowlsware, we also are one of the UK's leading suppliers of:

- workwear
- schoolwear
- leisurewear
- sportswear

Our ever-expanding range encompasses 100's of brands and 10,000s of products.

WE'RE A MULTI-BRAND ONE-STOP SHOP

We offer one of the largest multi-brand selections in the UK, with big name and EXCLUSIVE industry-leading brands – all under one roof.

OUR HERITAGE

Established in 1972 as a manufacturer, having been founded upon a tailoring background since 1947 and stretching back generations.

We are happy to provide you a fully refundable product sample before purchase

DELIVERY CHARGES		UK MAINLANDS & HIGHLANDS				IRELAND & UK ISLANDS	Royal Mail (Single item)
		Next Working Day			Saturday Pre-6pm	2 Working Days	
Orders placed by	Order Value	Pre-5pm	Pre-Noon	Pre-10am			
EMAIL / FAX	£0-£99.99	£5.95	£10.95	£17.25	£17.25	£9.95	2 nd class £2.49
	£100-£249.99	£4.95	£9.95	£16.25	£16.25	£8.95	
	£250+	FREE	£5.95	£10.95	£10.95	FREE	
PHONE	£0-£249.99	£6.95	£11.95	£18.25	£18.25	£9.95	1 st class £3.95
	£250+	FREE	£6.95	£11.95	£11.95	FREE	

Delivery charges above are correct at time of print but may be subject to revision at any time. We will confirm charges at time of placing your order.

CONTENTS

◆ Unisex Bowlsware



Poloshirts	4 - 5
Sweatshirts	6
Jumpers	7 - 8
Trousers	8
Shoes	9
Jackets	10 - 13
Bodywarmers	13

◆ Ladies Bowlsware



Poloshirts	15
Trousers / Skirts	16
Shoes	16
Sweatshirts	17
Jackets	18 - 19

Personalised
to your
Club.

Customise with your own logos
PRINT or EMBROIDERY



100% Polyester Bowling Polo Sports-Shirt
Style no: PPOA01 Manuf. code: PPOA01

- Pique knit fabric
- Rib knit collar with taped back neck
- 3 button reinforced placket
- Fashioned shoulders and sleeves
- Front pocket

Fabric: **100% POLYESTER**



Sizes:	S	M	L	XL	XXL
Chest (to fit):	36/38	38/40	40/42	42/44	44/46



50/50 PC Mid-Weight Poly-Cotton Pique Polo
Style no: TPA02 Manuf. code: TPA02

- Tight knit pique fabric for embroidery & print
- Durable but comfortable 50/50 Poly-Cotton
- Rib knit collar and cuffs
- Three self-colour button placket
- Taped back neck seam
- Reinforced placket for strength

Weight: **210GSM**

Fabric: **50% SUPERCARDED REFINED RINGSPUN COTTON / 50% POLYESTER**



Sizes:	S	M	L	XL	XXL	3XL	4XL
Chest to fit:	36/38	38/40	40/42	42/44	44/46	46/48	48/50

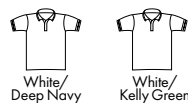


100% Contrast Tipped Polo
Style no: SPTA Manuf. code: 63-032-0

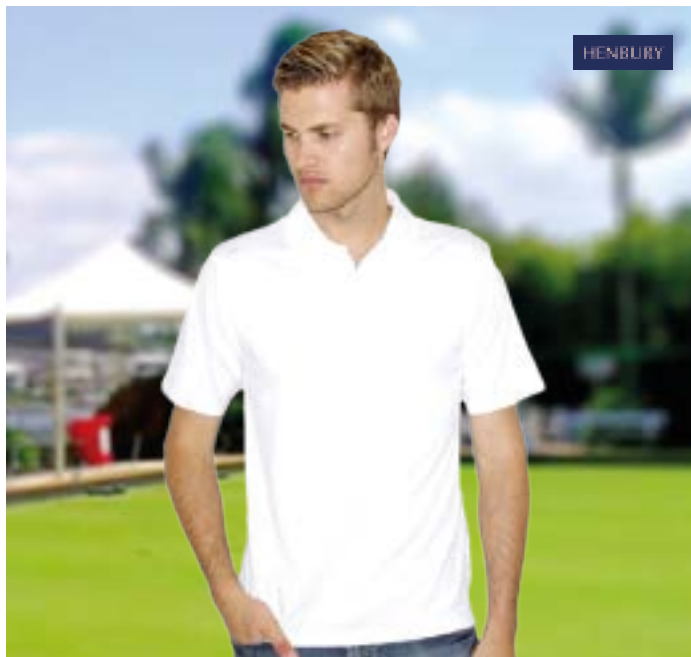
- Double-stripe tipping detail on the collar and cuffs for a more sporty look
- Worldwide Responsible Accredited Production (WRAP) certified production
- Contrast colour back and neck tape
- Three button placket with self coloured buttons
- Side vents
- Taped neckline
- Reinforced shoulders

Weight: **170GSM**

Fabric: **100% COTTON**



Sizes:	S	M	L	XL	XXL	3XL
Chest (to fit):	35/37	38/40	41/43	44/46	47/49	50/52



100% Polyester Coolplus® Wicking Polo
Style no: HPA475 Manuf. code: H475

- 2 button placket with dyed to match buttons
- Flat knit collar
- Hemmed cuffs and side vents
- Wicking Yarn

Weight: **180GSM**

Fabric: **100% POLYESTER**



Sizes:	XXS	XS	S	M	L	XL	XXL	3XL	4XL	5XL
Chest (to fit):	34	37	39	41	44	46	49	51	54	57

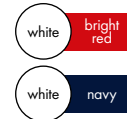


100% Cotton Mens 'St Mellion' Polo
Style no: KK606 Manuf. code: KK606

- Cuffed sleeves
- Half moon yoke on the back
- Side vents
- Slanted placket
- Spare button
- Taped back neck
- Suitable for Embroidery, Heat Transfer & Screen Printing

Weight: **210GSM**

Fabric: **100% COMBED COTTON PIQUE**



Sizes:	XS	S	M	L	XL	XXL
Chest to fit:	32/34	36/38	40	42	44	46/48



'Riviera' Contrast Raglan Polo
Style no: KK974 Manuf. code: KK974

- Comfort finish cuff seams
- Curved back hem
- Dry wicking fabric
- Side vents
- Spare button
- Straight front hem

Weight: **140GSM**

Fabric: **100% POLYESTER JERSEY KNIT/MESH**



Sizes:	S	M	L	XL	XXL
Chest to fit:	36/38	40	42	44	46/48



Slim Fit Team Style Polo
Style no: KK603 Manuf. code: KK603

- 1 x 1 Rib flat knit collar and cuffs
- Narrow three button curved top placket
- Striped woven tape applied to shoulders and side seams

Weight: **210GSM**

Fabric: **100% COMBED COTTON PIQUE**



Sizes:	XS	S	M	L	XL	XXL
Chest to fit:	32/34	36/38	40	42	44	46/48



100% Cotton 'Scottsdale' Polo
Style no: KK617 Manuf. code: KK617

- Worldwide Responsible Accredited Production (WRAP) certified production
- 1x1 rib flat knit collar with open cuffs
- Contrast panels front and back
- Contrast placket
- Taped back neck
- Cuff piping and taped side vents
- Spare button
- Three button slanted placket
- Classic fit

Weight: **210GSM**

Fabric: **100% COMBED COTTON PIQUE**



Sizes:	S	M	L	XL	XXL
Chest (to fit):	36/38	40	42	44	46/48



Bowling Zipper Sweatshirt
Style no: TSA03 Manuf. code: TSA03

- Taped back neck seam
- Full zip front
- Two front pockets
- Twin needle stitching (all seams)
- Lycra rib cuffs and border

Weight: **300gsm**
Fabric: **70% COTTON / 30% POLYESTER**



Sizes:	S	M	L	XL	XXL
Chest to fit:	36/38	38/40	40/42	42/44	44/46



Hooded Full-Zip Sweatshirt
Style no: TSA05 Manuf. code: TSA05

- Double fabric hood with drawcord
- Set-in sleeves
- Front pouch pockets
- Twin needle stitching on all seams

Weight: **300gsm**
Fabric: **70% SUPERCARDED RINGSPUN COTTON / 30% POLYESTER**



Sizes:	S	M	L	XL	XXL
Chest to fit:	36/38	38/40	40/42	42/44	44/46



100% Cotton Extra Premium Polo
Style no: TPA01 Manuf. code: TPA01

- Heavy weight 230g pique fabric
- Tight knit ideal for print & embroidery
- Soft & comfortable 100% Cotton
- Rib knit collar & cuffs
- Taped back neck seam
- Reinforced Placket & Shoulder
- 3 matching colour button placket

Weight: **230gsm**
Fabric: **100% COMBED RINGSPUN COTTON**



Sizes:	S	M	L	XL	XXL	3XL	4XL
Chest to fit:	36/38	38/40	40/42	42/44	44/46	46/48	48/50



V-neck Set-In Sweatshirt
Style no: TSA02 Manuf. code: TSA02

- Elastane in rib neck, cuffs & border
- Twin needle stitching on all seams
- Taped back neck & shoulder seams

Weight: **300gsm**
Fabric: **70% COTTON / 30% POLYESTER**



Sizes:	S	M	L	XL	XXL
Chest to fit:	36/38	38/40	40/42	42/44	44/46



Fine-Knit V-Neck Sleeveless Tank-Top
Style no: PJUA02 Manuf. code: PJUA02

- 12 gauge fine-knit soft handle fabric
- Linked collar and arm bands
- Elastane in cuffs and border

Fabric: **100% HIGH BULK ACRYLIC**



Sizes:	S	M	L	XL	XXL	3XL
Chest to fit:	36/38	38/40	40/42	42/44	44/46	46/48



Fine-Knit V-Neck Sleeveless Tank-Top - Logo
Style no: PJUA02L Manuf. code: PJUA02L

- 12 gauge fine-knit soft handle fabric
- Linked collar and arm bands
- Elastane in cuffs and border

Fabric: **100% HIGH BULK ACRYLIC**



Sizes:	S	M	L	XL	XXL	3XL
Chest to fit:	36/38	38/40	40/42	42/44	44/46	46/48



Bowling V-Neck L/S Jumper Chunky Knit
Style no: PJUA05 Manuf. code: PJUA05

- Set-in long sleeves
- Linked collar
- Elastane in cuffs and border
- 7 gauge chunky-knit soft handle fabric

Fabric: **100% HIGH BULK ACRYLIC**



Sizes:	S	M	L	XL	XXL
Chest to fit:	36/38	38/40	40/42	42/44	44/46



Bowling V-Neck Sleeveless Chunky Knit
Style no: PJUA06 Manuf. code: PJUA06

- Chunky knit soft-feel
- Linked collar and arm bands
- Elastane in cuffs and border
- 7 gauge chunky-knit soft handle fabric

Fabric: **100% HIGH BULK ACRYLIC**



Sizes:	S	M	L	XL	XXL	3XL
Chest to fit:	36/38	38/40	40/42	42/44	44/46	46/48



Bowling V-Neck Jumper Long Sleeves
Style no: PJUA01 Manuf. code: PJUA01

- Raglan sleeves
- Linked collar
- Elastane in cuffs and border
- 12 gauge fine-knit soft handle fabric

Fabric: **100% High Bulk Acrylic**

White

Sizes:	S	M	L	XL	XXL	3XL
Chest to fit:	36/38	38/40	40/42	42/44	44/46	46/48




Bowling V-Neck Jumper Long Sleeve with Logo
Style no: PJUA01L Manuf. code: PJUA01L

- Raglan sleeves
- Linked collar
- Elastane in cuffs and border
- 12 gauge fine-knit soft handle fabric

Fabric: **100% High Bulk Acrylic**

White



Sizes:	S	M	L	XL	XXL	3XL
Chest to fit:	36/38	38/40	40/42	42/44	44/46	46/48



Bowling Trouser with belt
Style no: WTRA02 Manuf. code: WTRA02

- Flat Front, with belt
- Two side and one back pocket with button
- Lined waistband

Weight: **280gsm**

Fabric: (woven) **100% Polyester**

Grey

Weight Sizes:	30	32	34	36	38	40	42	44	48	50	52	54	56
Leg Length:	Short (29"); Regular (31"); Long (33")												



Lined Showerproof Trouser with logo
Style no: PTRAO2 Manuf. code: PTRAO2

- Fully elasticated waist with draw cord adjuster
- Two side zip pockets
- Fully lined
- Open hem

Fabric: **100% Polyester**

White

Sizes:	S	M	L	XL	XXL
Weight Sizes:	30/32	33/34	36/38	40/41	42/44
Leg Length:	Regular (31")				



'Crown King Churchill' Gents Lace-Up Shoes
Style no: PFOA9530B, PFOA9530F, PFOA9530G

- Smooth Flat Soles
- Leather Uppers

Outer Material: **LEATHER**

Closure: **Lace-Up**

Material Composition: **LEATHER UPPERS**

Grey White Brown

Sizes:	5 - 12
--------	--------



Leather Upper Touch Fastening Shoes
Style no: PFOA9529B, PFOA9529F, PFOA9529G

- Perforated Leather Moccasin Stitched Upper
- Velcro Bar Strap Fastening
- Padded Foam Lining and Insole
- Comfortable PVC Micro Sole

Outer Material: **Leather**

Inner Material: **Textile**

Sole: **Manmade**

Grey White Brown

Sizes:	5 - 12
--------	--------



'DRIVE' Mens Bowling Shoes
Style no: PFOA837

Outer Material: **LEATHER**

Closure: **Lace-Up**

Material Composition: **LEATHER UPPERS**

Grey White

Sizes:	3 - 12
--------	--------



'JACK' Lace Up Trainer-Style Mens Bowling Shoes
Style no: PFOA836

Outer Material: **LEATHER**

Closure: **Lace-Up**

Material Composition: **LEATHER UPPERS**

Grey White

Sizes:	3 - 12
--------	--------



Fleece Lined Showerprof Jacket with Logo

Style no: PJAA01 Manuf. code: PJAA01

- Fleece lined body + sleeves + hood
- Full zip front with 2 front zip pockets
- Elasticated drawcord on waist
- Detachable hood, attached with stud fastening
- Made in the UK
- Adjustable draw cord on hood

Fabric: **100% POLYESTER (WATERPROOF)**

Sizes:	S	M	L	XL	XXL
Chest to fit:	36/38	38/40	40/42	42/44	44/46

White



Mesh Lined Showerprof Jacket with Logo

Style no: PJAA02 Manuf. code: PJAA02

- Mesh lined body + sleeves + hood
- Full zip front with 2 front zip pockets
- Elasticated drawcord on waist
- Detachable hood, attached with stud fastening
- Made in the UK
- Adjustable draw cord on hood

Fabric: **100% POLYESTER (WATERPROOF)**

Sizes:	S	M	L	XL	XXL
Chest to fit:	36/38	38/40	40/42	42/44	44/46

White



Comptemorary Softshell Jacket

Style no: KB401 Manuf. code: KB401

- Softshell 3 layer bonded fabric.
- Breathable up to 3000 and water resistant up to 8000mm.
- Zip through front.
- Two zip closing side pockets
- One zipped pocket on left sleeve

Outer Fabric: **95% POLYESTER / 5% ELASTANE**

Weight: **300GSM**

Sizes:	S	M	L	XL	XXL
Chest to fit:	36	38	40	42	44/46

White



Middleweight Fleece-Lined Jacket

Style no: BA656 Manuf. code: BA656

- Micro-fleece lining for extra warmth
- Standing collar for wind protection
- Clean and ergonomic lines offer freedom of movement and flexible end usage
- Essential contemporary look supports broad range of uses
- PU Coating for better water protection and breathability
- Ergonomic adjustable hood concealed in collar, with elasticated cord and two easy to adjust stoppers

Outer Fabric: **100% POLYESTER 210T TAFFETA**

Inner Fabric: **100% POLYESTER ANTI-PILLING MICROFLEECE**

Weight: **OUTER: 60-70GSM, LINING: 180GSM**

Sizes:	S	M	L	XL	XXL	3XL
Chest to fit:	36/38	38/40	41/42	43/44	45/47	47/49

White



Mens Hooded Softshell Jacket

Style no: BA630 Manuf. code: BA630

- Detachable balaclava hood with adjustable drawstrings and trendy stoppers
- Full zip opening with chin protector, Full inner placket from shell fabric
- 2 front side pockets with zip
- Cuffs with velcro closing tabs and embossed plastic puller
- Flat stitching for bigger comfort
- Adjustable bottom hem (with draw cord) Longer back

Fabric: **BOUNDED BREATHABLE MEMBRANE WITH MICRO HOLES**

Outer Layer: **94% POLYESTER/ 6% ELASTANE (WOVEN SOFTSHELL) 340GSM**

Mid Layer: **BONDED BREATHABLE MEMBRANE WITH MICRO HOLES**

Inner Layer: **100% POLYESTER ANTI-PILLING MICRO FLEECE**

Lining: **100% POLYESTER MESH ON FRONT PANELS, WATERPROOF: 5000MM, BREATHABLE: 1000MVP**

White

Sizes:	S	M	L	XL	XXL	3XL
Chest to fit:	36/38	38/40	41/42	43/44	45/47	47/49



Mens Softshell Jacket

Style no: BA661 Manuf. code: BA661

- Longer hem and high collar provide additional warmth
- Essential contemporary look supports broad range of uses
- Two inner pockets
- Full decoration access
- Two zipped hand pockets with zipper garage
- Distinctive contrasting lining colours
- Fabric tested for all printing techniques and embroidery
- Water repellent and breathability
- Reinforced seams for extra durability

Weight: **300GSM**

Outer Fabric: **96% POLYESTER / 4% ELASTANE WOVEN SOFTSHELL**

Inner Fabric: **100% POLYESTER MICRO-FLEECE**

Sizes:	S	M	L	XL	XXL	3XL
Chest to fit:	36/38	38/40	41/42	43/44	45/47	47/49

White



Mens Down Superhood Jacket

Style no: BA657 Manuf. code: BA657

- Feather touch padding keeps you warm and comfortable
- Padded hood: obvious, detachable and adjustable. It adds style and ensures standing collar
- Full length internal stormflap and rib on cuffs + hem for wind protection
- High quality accessories and tone-on-tone SBS zippers
- 1 inner wallet pocket
- 2 zipped hand pockets
- Self fabric inner collar

Outer Fabric: **100% POLYESTER TAFFETA**

Inner Fabric: **100% POLYESTER PADDED TAFFETA WITH FEATHER TOUCH PADDED**

Weight: **60GSM + PADDING**

Sizes:	S	M	L	XL	XXL	3XL
Chest to fit:	43/45	46/48	48/50	50/52	53/55	55/57

White



'ZERO' Lightweight Jacket

Style no: TS010 Manuf. code: TS010

- Cadet collar
- Lightweight
- Wind resistant
- Shower resistant
- Full length at front zip
- Two zip pockets
- Drawcord at hem
- Jacket fold away into pocket

Outer Fabric: **100% POLYESTER**

Weight: **55GSM**

Sizes:	S	M	L	XL	XXL
Chest to fit:	38	41	44	46	48

White



'Sirocco' Mens Jacket

Style no: BA601 Manuf. code: BA601

- Full length zip opening with zip puller in contrasted colour
- Hood concealed inside the collar
- Fold away jacket in pocket with double slider zip
- Adjustable bottom hem with drawcord

Fabric: **100% TAFFETA NYLON, WATERPROOF**
Weight: **210T/70gsm**



Sizes:	S	M	L	XL	XXL	3XL
Chest to fit:	36/38	38/40	41/42	43/44	45/47	47/49



'Ardmore' Waterproof Jacket

Style no: RG601 Manuf. code: RG601

- Windproof fabric
- Taped seams
- Concealed hood with adjuster
- 2 lower zipped pockets
- 1 internal pocket with earphone cord access
- Adjustable cuffs
- Adjustable shockcord hem

Outer Fabric: **POLYESTER 100% WATERPROOF HYDRAFORT 5000 COATED PEACHED POLYESTER**
Inner Fabric: **POLYESTER MESH LINED**



Sizes:	S	M	L	XL	XXL	3XL
Chest to fit:	37/38	39/40	41/42	43/44	46/48	49/51



Air Windbreaker Jacket

Style no: BA605 Manuf. code: BA605

- Full zip opening with zip pull
- Concealed hood with velcro closing
- Fold away jacket (k-way system) in right pocket with double slider zip
- 2 front pockets with zips
- Elasticated cuffs
- Adjustable botom hem (with drawcord)

Outer Fabric: **100% TAFFETA NYLON, WATERPROOF**
Inner Fabric: **100% POLYESTER MESH, SLEEVE LINING: 100% POLYESTER TAFFET**



Sizes:	S	M	L	XL	XXL	3XL
Chest to fit:	36/38	38/40	41/42	43/44	45/47	47/49



Bowling Polar Fleece

Style no: TFA01 Manuf. code: TFA01

- Taped back neck seam
- Full zip front
- Two zip pockets
- Draw cord waist
- Two internal open pockets
- Zip pulls on all zips

Weight: **300GSM**
Fabric: **100% POLYESTER (ANTI PILL)**



Sizes:	S	M	L	XL	XXL
Chest to fit:	36/38	38/40	40/42	42/44	44/46



Reversible Waterproof Jacket

Style no: TFA05 Manuf. code: TFA05

- Fully waterproof taped seams
- Fully reversible
- Concealed hood
- Adjustable draw cord bottom
- Full length storm flap
- Covered zip-pockets

Weight: **300GSM**
Outer Fabric: **100% NYLON WATERPROOF**
Inner Fabric: **100% POLYESTER ANTI-PILL FLEECE**



Sizes:	S	M	L	XL	XXL
Chest to fit:	36/38	38/40	40/42	42/44	44/46



Pack-Away Showerproof Kagoul

Style no: TJAA03 Manuf. code: TJAA03

- Full zip front
- Integrated extended hood
- Two lower pockets with coverflap
- Drawcord hem
- Packaway pouch with a hanging hook

Weight: **40z**
Fabric: **100% WATERPROOF NYLON**



Sizes:	S	M	L	XL	XXL
Chest to fit:	36/38	38/40	42/44	46/48	50/52

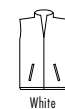


Fleece Lined Gilet With Bowls Logo

Style no: PBWA03 Manuf. code: PBWA03

- Fuly fleece lined
- Full zip front with 2 front zip pockets
- Elasticated draw cord on waist
- Made in the UK

Fabric: **100% POLYESTER (WATERPROOF)**



Sizes:	S	M	L	XL	XXL
Chest to fit:	36/38	38/40	40/42	42/44	44/46



Fleece Lined Bodywarmer

Style no: PBWA02 Manuf. code: PBWA02

- Polar fleece lined
- Zip front
- Two patch pockets

Fabric: **100% NYLON OUTER AND LINING**



Sizes:	S	M	L	XL	XXL
Chest to fit:	36/38	38/40	40/42	42/44	44/46

LADIES' BOWLS WEAR



Poloshirts 15

Trousers / Skirts 16

Shoes 16

Sweatshirts 17

Jackets 18 - 19

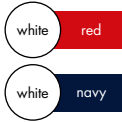


'St Mellion' Polo
Style no: KK706 Manuf. code: KK706

- 1x1 rib flat knit collar and cuff with contrast stripe
- Contrast inner placket, Taped back neck and taped side vents
- Pearl effect buttons, Taped back neck
- Three button slanted top placket, Classic fit
- Worldwide Responsible Accredited Production (WRAP) certified production

Weight: 210gsm
Fabric: 100% COMBED COTTON PIQUE

Sizes:	8	10	12	14	16	18	20
Chest to fit:	30	32	34	36	38	40	42



Bowling Blouse Open V-Neck
Style no: PBLLO1 Manuf. code: PBLLO1

- Short sleeves
- Woven stretch fabric
- Open v-neck with fused collar
- Side slits
- Easycare fabric

Weight: 220gsm
Fabric: 100% POLYESTER

Sizes:	S	M	L	XL	XXL
Chest to fit:	10/12	12/14	14/16	16/18	18/20



Bowling Blouse
Style no: WBLLO2 Manuf. code: WBLLO2

- Short sleeves
- Revere collar
- Button front
- Left breast pocket
- Side slits
- Easycare fabric

Weight: 110gsm
Fabric: 65% POLYESTER / 35% COTTON (WOVEN)

Sizes:	S	M	L	XL	XXL
Chest to fit:	10/12	12/14	14/16	16/18	18/20



Bowling Top Open V-Neck with Collar
Style no: PBLLO6 Manuf. code: PBLLO6

- Pique knit fabric
- Rib Knit Collar with taped back neck seam
- Fashioned panels at shoulders front & back
- One side pocket on the left
- Side darts for a better fit

Fabric: 100% POLYESTER

Sizes:	S	M	L	XL	XXL
Chest to fit:	10/12	12/14	14/16	16/18	18/20





Full Waist Bowling Skirt

Style no: PSKA01 Manuf. code: PSKA01

- Full waistband
- Invisible side zip
- Back and front kick pleats
- Side pockets

Weight: **270gsm**
Fabric: **100% POLYESTER**



Waist Sizes:	10	12	14	16	18	20	22	24
Leg Lengths:	Short (25"), Regular (27"), Long (29")							



Ladies' Trousers

Style no: PTRAO1 Manuf. code: PTRAO1

- Half elasticated waist
- Two side pockets

Weight: **270gsm**
Fabric: **100% POLYESTER**

Waist Sizes:	10	12	14	16	18	20	22	24	26	28
Leg Lengths:	Short (27"), Regular (29"), Long (31")									



'SKIPPER' Velcro Touch Ladies Bowling Shoe

Style no: PFOL839 Manuf. code: PFOL839

Upper Material: **PU/Textile**
Lining & Sock Material: **Textile**
Sole Material: **Other materials**



Sizes:	3 - 8
--------	-------



'KITTY' Lace Up Trainer-Style Ladies Bowling Shoe

Style no: PFOL838 Manuf. code: PFOL838

Upper Material: **PU/Textile**
Lining & Sock Material: **Textile**
Sole Material: **Other materials**



Sizes:	3 - 8
--------	-------



Lady-Fit Sweat Jacket

Style no: SSZL Manuf. code: 62-116-0 SS85

- Cadet collar with single jersey back neck tape
- Two pouch pockets
- Covered metal zip for enhanced printability
- Shaped side seams for a feminine fit
- Waist and cuff in cotton/elastane rib
- Worldwide Responsible Accredited Production (WRAP) certified production

Weight: **260gsm**
Fabric: **70% COTTON / 30% POLYESTER**



Sizes:	XS	S	M	L	XL	XXL
Chest to fit:	8	10	12	14	16	18



Bowling Sweatshirt Cardigan

Style no: TCA01 Manuf. code: TCA01

- Taped back neck seam
- Five button front
- Two front pockets
- Twin needle stitching (all seams)
- Lycra rib cuffs and border

Weight: **300gsm**
Fabric: **70% COTTON / 30% POLYESTER**



Sizes:	S	M	L	XL	XXL
Chest to fit:	10/12	12/14	14/16	16/18	18/20



Knitted Cardigan Chunky Knit

Style no: PCAL02 Manuf. code: PCAL02

- Chunky knit soft-feel fabric
- Self-colour buttons
- Linked strap
- Drop Sleeves
- Elastane in cuffs and border
- Two side pockets

Fabric: **100% HIGH BULK ACRYLIC**



Sizes:	S	M	L	XL	XXL
Chest to fit:	10/12	12/14	14/16	16/18	18/20



Softshell Jacket Kariban

Style no: KB400 Manuf. code: KB400

- Softshell 3 layer bonded fleece
- Zip through front
- Two front zipped pockets
- One zipped pocket on left sleeve
- Breathable up to 3000mm and water resistant up to 8000mm

Fabric: **95% POLYESTER / 5% ELASTANE**
Weight: **300gsm**



Sizes:	S	M	L	XL
Chest to fit:	8/10	12/14	16	18



Active Fleece Bodywarmer

Style no: R37X Manuf. code: R37X

- Special fibres to ensure fabric absorbs a maximum of 1% of its weight in moisture which evaporates with movement in the air
- Anti-pill
- Stretchy fit
- 2 large front pockets with active fleece by Result® lining
- Concealed front revers
- Unlined

Outer Fabric: 330gsm HEAVY ACTIVE FLEECE BY RESULT®

Inner Fabric: 100% POLYESTER

Sizes:

Chest to fit:

XS	S	M	L	XL	XXL	3XL
34	38	41	44	47	50	54

White



Microfleece Jacket

Style no: R114X Manuf. code: R114X

- Anti pill fleece
- Extremely lightweight
- Super warm & light
- Wash/Dry in minutes
- Easy open front zip puller
- Full front zip fastening
- 2 side pockets
- Super stretch fit

Fabric: 100% POLYESTER MICROFLEECE

Weight: 200gsm

Sizes:

Chest to fit:

XS	S	M	L	XL	XXL	3XL
34	38	41	44	47	50	53

White



Ladies Mani Powerfleece Stretch Jacket

Style no: EL031M Manuf. code: EL031M

- Regular fit
- Thumb holes
- Elastic binding at the cuffs and the bottom hem of the jacket
- Inner storm flap with chin guard
- Media pocket inside right pocket
- Reflective logo print at back
- Insulating, sleeve and hand pockets with zippers
- Satin neck tape
- Four way stretch

Fabric: 89% POLYESTER, 11% ELASTANE JERSEY KNIT, BRUSHED INSIDE

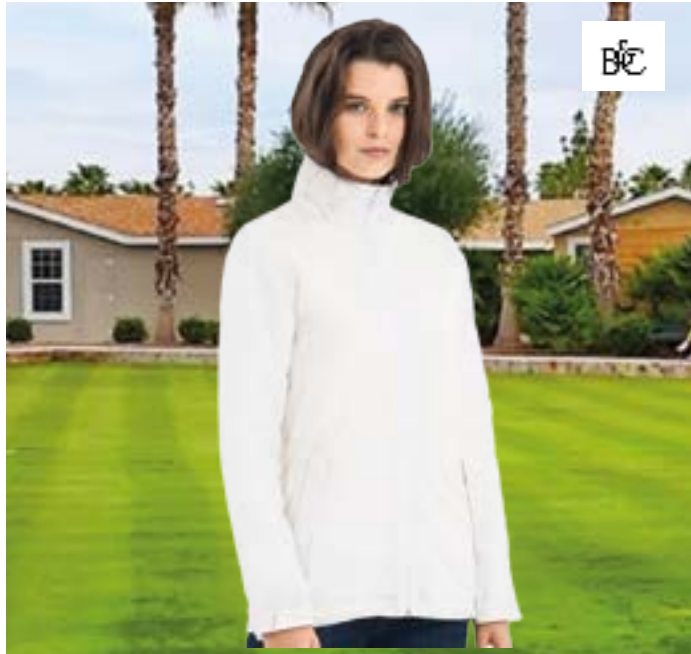
Weight: 245gsm

Sizes:

Chest to fit:

S	M	L	XL	XXL
8/10	12	14	16	18

White/ Grey



Ladies Middleweight Fleece-Lined Jacket

Style no: BA656F Manuf. code: BA656F

- Micro-fleece lining for extra warmth
- Standing collar for wind protection
- Clean and ergonomic lines offer freedom of movement and flexible end usage
- PU Coating for better water protection and breathabil
- Ergonomic adjustable hood concealed in collar, with elasticated cord and two easy to adjust stoppers

Outer Fabric: 100% POLYESTER TAFFETA

Inner Fabric: 100% POLYESTER PADDED TAFFETA WITH FEATHER TOUCH PADDING

Weight: OUTER: 60-70gsm, LINING: 180gsm

Sizes:

Chest to fit:

XS	S	M	L	XL	XXL
36/38	38/40	41/42	43/44	45/47	47/49

White



Ladies 'Sirocco' Jacket

Style no: BA601F Manuf. code: BA601F

- Full opening zip with pull
- Adjustable bottom hem with drawcord
- 2 front pockets
- Feminine cut
- Hood concealed inside the collar
- Fold-away jacket (k-way(R) system) in pocket, double slider zip

Fabric: 100% TAFFETA NYLON, SHOWERPROOF

Weight: 210T/70gsm

Sizes:

Ladies sizes:

XS	S	M	L	XL	XXL
8	10	12	14	16	18/20

White



Ladies Down Superhood Jacket

Style no: BA657F Manuf. code: BA657F

- Feather touch padding keeps you warm and comfortable
- Padded hood: obvious, detachable and adjustable.
- Full length internal stormflap and rib on cuffs + hem for wind protection
- 1 inner wallet pocket, 2 zipped hand pockets
- Self fabric inner collar
- High quality accessories and tone-on tone SBS zippers

Outer Fabric: 100% POLYESTER 300T TAFFETA

Inner Fabric: 100% POLYESTER PADDED TAFFETA WITH FEATHER TOUCH PADDING

Weight: 60gsm + PADDING

Sizes:

Ladies size:

XS	S	M	L	XL	XXL
8	10	12	14	16	18/20

White



Hooded Softshell Jacket

Style no: BA630F Manuf. code: BA630F

- Feminine fitted design, Perfect arm and elbow sleeve shape
- Detachable balaclava hood with adjustable drawstrings and trendy stoppers
- Full zip opening with chin protector, Full inner placket from shell fabric
- Two front side pockets with zip and one front chest pocket
- Cuffs with velcro closing tabs and embossed plastic puller
- Flat stitching for bigger comfort, Open hem with "low back", elasticated cords and two easy adjust stoppers
- Easy access for printing and embroidery

Outer Fabric: OUTER: 94% POLYESTER, 6% ELASTANE

INNER: 100% POLYESTER ANTI PILLING MICROFLEECE

Inner Fabric: LINING: 100% POLYESTER MESH LINING ON FRONT PANELS

Inner Fabric: 340gsm

Sizes:

Chest to fit:

XS	S	M	L	XL	XXL
2/34	36/38	38/40	41/42	43/44	45/47

White



Ladies Softshell Jacket

Style no: BA661F Manuf. code: BA661F

- Longer hem and high collar provide additional warmth
- Contemporary look supports broad range of uses
- Two zipped hand pockets with zipper garage
- Two inner pockets
- Feminine cut breathable and water repellent
- Full decoration access
- Fabric tested for all printing techniques and embroidery

Outer Fabric: 96% POLYESTER, 4% ELASTANE WOVEN SOFTSHELL

Inner Fabric: 100% POLYESTER MICROFLEECE

Weight: 300gsm

Sizes:

Chest to fit:

XS	S	M	L	XL	XXL
8	10	12	14	16	18/20

White



Tel (Free): **0800 788 0777**

E-mail: sales@ckl.uk.com

Web: www.ckl.uk.com

53 Wallace Street, Glasgow G5 8DJ

