

NOMA[®]

ULTIMATE PROTECTION
AGAINST SPILLS, DIRT & STAINS





WATER TEST: **PASSED**

COFFEE TEST: **PASSED**

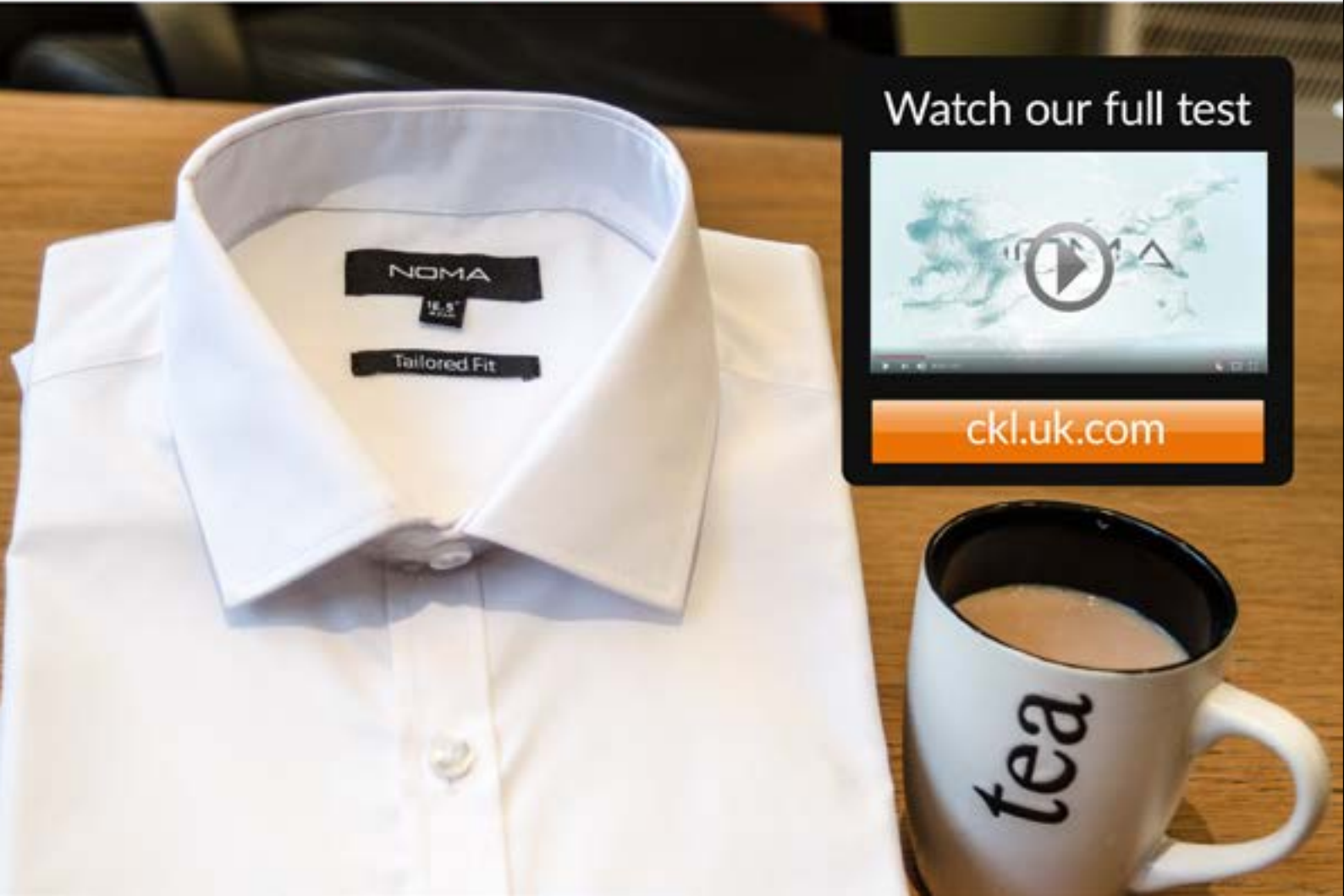
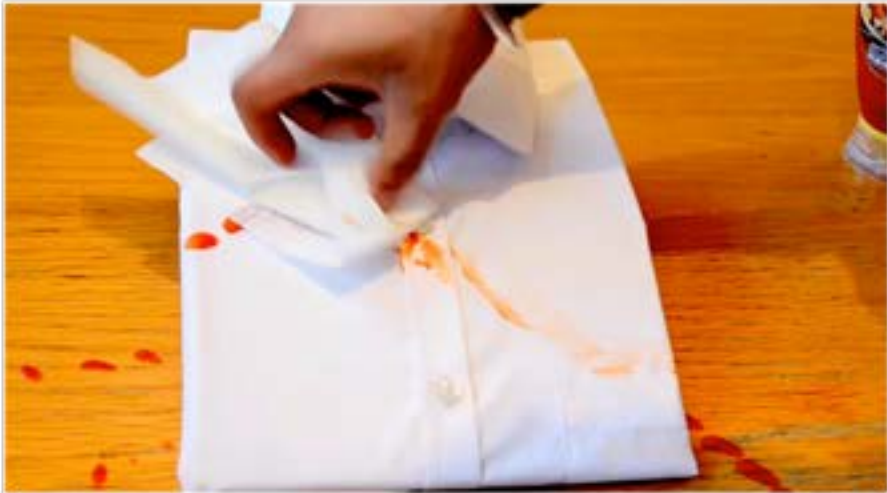
TEA TEST: **PASSED**

SAUCE TEST: **PASSED**





Wipe lightly with minimal pressure, to avoid pushing any spillage into the textured fabric weave.



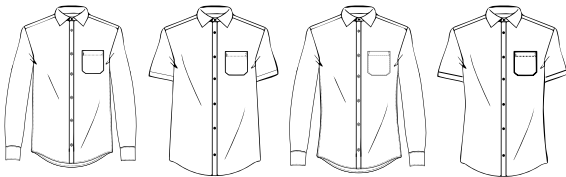
INNOVATIVE YET TRADITIONAL

Harnessing over 70 years’ experience in quality tailoring, NOMA’s latest innovative TEFLON™ coated and NON-IRON fabrics are the ultimate in easy care smartness and comfort, as well as incredible long-lasting durability.

CLASSIC MEN

REGULAR FIT & TAILORED FIT

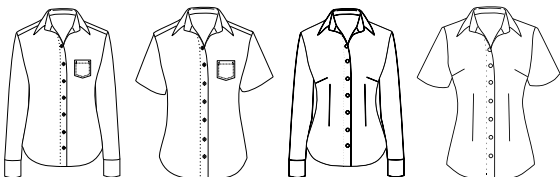
| COLLAR SIZE | TO FIT CHEST |
|----------------|--------------|
| 14.5" (37cm) | 38" (96cm) |
| 15" (38cm) | 40" (101cm) |
| 15.5" (39.5cm) | 42" (107cm) |
| 16" (41cm) | 44" (112cm) |
| 16.5" (42cm) | 46" (117cm) |
| 17" (43cm) | 48" (122cm) |
| 17.5" (44.5cm) | 50" (127cm) |
| 18" (46cm) | 52" (132cm) |
| 18.5" (47cm) | 54" (137cm) |
| 19" (48cm) | 56" (142cm) |
| 19.5" (49.5cm) | 58" (147cm) |
| 20" (51cm) | 60" (152cm) |
| 20.5" (52cm) | 62" (157cm) |



CLASSIC LADIES

SHAPED FIT & FITTED

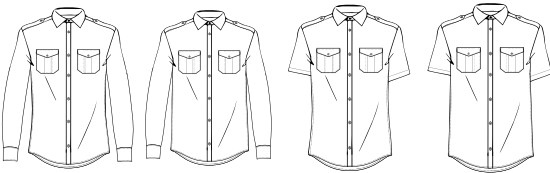
| SIZE | UK | DE/SP /EUR | FR | IT |
|------|----|------------|-----|-----|
| XS | 8 | 34" | 36" | 40" |
| S | 10 | 36" | 38" | 42" |
| M | 12 | 38" | 40" | 44" |
| L | 14 | 40" | 42" | 46" |
| XL | 16 | 42" | 44" | 48" |
| XXL | 18 | 44" | 46" | 50" |
| 3XL | 20 | 46" | 48" | 52" |
| 4XL | 22 | 48" | 50" | 54" |



PILOT MEN

REGULAR FIT & TAILORED FIT

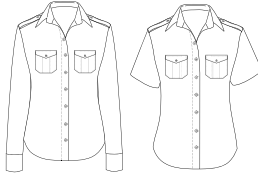
| COLLAR SIZE | TO FIT CHEST |
|----------------|--------------|
| 14.5" (37cm) | 38" (96cm) |
| 15" (38cm) | 40" (101cm) |
| 15.5" (39.5cm) | 42" (107cm) |
| 16" (41cm) | 44" (112cm) |
| 16.5" (42cm) | 46" (117cm) |
| 17" (43cm) | 48" (122cm) |
| 17.5" (44.5cm) | 50" (127cm) |
| 18" (46cm) | 52" (132cm) |
| 18.5" (47cm) | 54" (137cm) |
| 19" (48cm) | 56" (142cm) |
| 19.5" (49.5cm) | 58" (147cm) |
| 20" (51cm) | 60" (152cm) |
| 20.5" (52cm) | 62" (157cm) |



PILOT LADIES

SHAPED FIT

| SIZE | UK | DE/SP /EUR | FR | IT |
|------|----|------------|-----|-----|
| XS | 8 | 34" | 36" | 40" |
| S | 10 | 36" | 38" | 42" |
| M | 12 | 38" | 40" | 44" |
| L | 14 | 40" | 42" | 46" |
| XL | 16 | 42" | 44" | 48" |
| XXL | 18 | 44" | 46" | 50" |
| 3XL | 20 | 46" | 48" | 52" |
| 4XL | 22 | 48" | 50" | 54" |



PROPERTIES

- Non-Iron
- Stain-resistant
- Wrinkle-resistant
- Oil-repellent
- Water-repellent
- Suitable for embroidery, DTG, screen printing, vinyl transfer & flocking

SPECIFICATION

MATERIAL SPECIFICATION:
65% Polyester / 35% Cotton Poplin
COLOUR:
Black, Blue, White



Sizes & Colours Available

| | White | Black | Sky Blue |
|----------------------|-------|-------|----------|
| Collar Size (inches) | 14.5 | 14.5 | 14.5 |
| | 15 | 15 | 15 |
| | 15.5 | 15.5 | 15.5 |
| | 16 | 16 | 16 |
| | 16.5 | 16.5 | 16.5 |
| | 17 | 17 | 17 |
| | 17.5 | 17.5 | 17.5 |
| | 18 | | 18 |
| | 18.5 | | 18.5 |
| | 19 | | 19 |
| | 19.5 | | 19.5 |
| | 20 | | 20 |

Men’s Classic Shirt Long Sleeve (Regular fit)

- Teflon Coated & Non-Iron
- Stain & Wrinkle-resistant
- Oil & Water-repellent
- Two-piece collar for a better fit
- Durable top-stitched seams
- Chest pocket (mitred corners)
- Rounded two-button adjustable cuff
- Fully fused front placket, collar & cuffs
- Spare button & name tag label



Product no: NSHA01

Fabric: 65% Polyester / 35% Cotton Poplin

Weight: 120gsm



Sizes & Colours Available

| | White | Black | Sky Blue |
|----------------------|-------|-------|----------|
| Collar Size (inches) | 14.5 | 14.5 | 14.5 |
| | 15 | 15 | 15 |
| | 15.5 | 15.5 | 15.5 |
| | 16 | 16 | 16 |
| | 16.5 | 16.5 | 16.5 |
| | 17 | 17 | 17 |
| | | | |
| | | | |

Men’s Classic Shirt Long Sleeve (Tailored fit)

- Teflon Coated & Non-Iron
- Stain & Wrinkle-resistant
- Oil & Water-repellent
- Two-piece collar for a better fit
- Durable top-stitched seams
- Chest pocket (mitred corners)
- Rounded two-button adjustable cuff
- Fully fused front placket, collar & cuffs
- Spare button & name tag label



Product no: NSHA01T

Fabric: 65% Polyester / 35% Cotton Poplin

Weight: 120gsm



Sizes & Colours Available

| | White | Sky Blue |
|----------------------|-------|----------|
| Collar Size (inches) | 14.5 | 14.5 |
| | 15 | 15 |
| | 15.5 | 15.5 |
| | 16 | 16 |
| | 16.5 | 16.5 |
| | 17 | 17 |
| | 17.5 | 17.5 |
| | 18 | 18 |
| | 18.5 | 18.5 |
| | 19 | 19 |
| | 19.5 | 19.5 |
| | 20 | 20 |

Men’s Classic Shirt Short Sleeve (Regular fit)

- Teflon Coated & Non-Iron
- Stain & Wrinkle-resistant
- Oil & Water-repellent
- Two-piece collar for a better fit
- Durable top-stitched seams
- Chest pocket (mitred corners)
- Fully fused front placket, collar
- Spare button & name tag label



Product no: NSHA02

Fabric: 65% Polyester / 35% Cotton Poplin

Weight: 120gsm



Sizes & Colours Available

| | White | Black | Sky Blue |
|----------------------|-------|-------|----------|
| Collar Size (inches) | 14.5 | 14.5 | 14.5 |
| | 15 | 15 | 15 |
| | 15.5 | 15.5 | 15.5 |
| | 16 | 16 | 16 |
| | 16.5 | 16.5 | 16.5 |
| | 17 | 17 | 17 |
| | | | |
| | | | |

Men’s Classic Shirt Short Sleeve (Tailored fit)

- Teflon Coated & Non-Iron
- Stain & Wrinkle-resistant
- Oil & Water-repellent
- Two-piece collar for a better fit
- Durable top-stitched seams
- Chest pocket (mitred corners)
- Fully fused front placket, collar
- Spare button & name tag label



Product no: NSHA02T

Fabric: 65% Polyester / 35% Cotton Poplin

Weight: 120gsm





Ladies Classic Shirt Long Sleeve (Shaped Fit)

- Teflon Coated & Non-Iron
- Stain & Wrinkle-resistant
- Oil & Water-repellent
- Classic two-piece one button collar
- Durable top-stitched seams
- Rounded two-button adjustable cuff
- Fully fused front placket, collar & cuffs
- V-Shaped pocket on left chest
- Rounded hem & spare button



Product no: NSHL01

Fabric: 65% Polyester / 35% Cotton Poplin
Weight: 120gsm



nano·TECH
Fibre Coating



Sizes & Colours Available

| | White | Black |
|----------------|-------|-------|
| UK Ladies Size | 8 | 8 |
| | 10 | 10 |
| | 12 | 12 |
| | 14 | 14 |
| | 16 | 16 |
| | 18 | 18 |
| | 20 | 20 |



Ladies Classic Shirt Long Sleeve (Fitted)

- Teflon Coated & Non-Iron
- Stain & Wrinkle-resistant
- Oil & Water-repellent
- Two-piece collar for a better fit
- Rounded two-button adjustable cuff
- Durable top-stitched seams
- Darts on bust, front & back for fit
- Soft-fused collar & cuffs
- Round Hem & Spare button



Product no: NSHL01F

Fabric: 65% Polyester / 35% Cotton Poplin
Weight: 120gsm



nano·TECH
Fibre Coating



Sizes & Colours Available

| | White | Black |
|----------------|-------|-------|
| UK Ladies Size | 8 | 8 |
| | 10 | 10 |
| | 12 | 12 |
| | 14 | 14 |
| | 16 | 16 |
| | 18 | 18 |
| | 20 | 20 |



Ladies Classic Shirt Short Sleeve (Shaped Fit)

- Teflon Coated & Non-Iron
- Stain & Wrinkle-resistant
- Oil & Water-repellent
- Classic two-piece one button collar
- Durable top-stitched seams
- Fully fused front placket & collar
- V-Shaped pocket on left chest
- Rounded hem & spare button



Product no: NSHL02

Fabric: 65% Polyester / 35% Cotton Poplin
Weight: 120gsm



nano·TECH
Fibre Coating



Sizes & Colours Available

| | White | Black |
|----------------|-------|-------|
| UK Ladies Size | 8 | 8 |
| | 10 | 10 |
| | 12 | 12 |
| | 14 | 14 |
| | 16 | 16 |
| | 18 | 18 |
| | 20 | 20 |



Ladies Classic Shirt Short Sleeve (Fitted)

- Teflon Coated & Non-Iron
- Stain & Wrinkle-resistant
- Oil & Water-repellent
- Two-piece collar for a better fit
- Durable top-stitched seams
- Darts on bust, front & back for fit
- Soft-fused collar
- Round Hem & Spare button



Product no: NSHL02F

Fabric: 65% Polyester / 35% Cotton Poplin
Weight: 120gsm



nano·TECH
Fibre Coating



Sizes & Colours Available

| | White | Black |
|----------------|-------|-------|
| UK Ladies Size | 8 | 8 |
| | 10 | 10 |
| | 12 | 12 |
| | 14 | 14 |
| | 16 | 16 |
| | 18 | 18 |
| | 20 | 20 |



| Sizes & Colours Available | | | |
|---------------------------|-------|-------|----------|
| | White | Black | Sky Blue |
| Collar Size (inches) | 14.5 | 14.5 | 14.5 |
| | 15 | 15 | 15 |
| | 15.5 | 15.5 | 15.5 |
| | 16 | 16 | 16 |
| | 16.5 | 16.5 | 16.5 |
| | 17 | 17 | 17 |
| | 17.5 | 17.5 | 17.5 |

Men’s Pilot Shirt Long Sleeve (Regular fit)

Product no: NSHA03

- Teflon Coated & Non-Iron
- Stain & Wrinkle-resistant
- Oil & Water-repellent
- Button down epaulettes
- Chest pocket (mitred corners)
- Pockets with bellowed pleats
- Pen access through flap
- Two-piece collar for a better fit
- Durable top-stitched seams
- Fused front placket, collar & cuffs
- Rounded two-button adjustable cuff
- Spare button & Name tag label



Fabric: 65% Polyester / 35% Cotton Poplin
Weight: 120gsm



| Sizes & Colours Available | | | |
|---------------------------|-------|-------|----------|
| | White | Black | Sky Blue |
| Collar Size (inches) | 14.5 | 14.5 | 14.5 |
| | 15 | 15 | 15 |
| | 15.5 | 15.5 | 15.5 |
| | 16 | 16 | 16 |
| | 16.5 | 16.5 | 16.5 |
| | 17 | 17 | 17 |
| | 17.5 | 17.5 | 17.5 |

Men’s Pilot Shirt Long Sleeve (Tailored fit)

Product no: NSHA03T

- Teflon Coated & Non-Iron
- Stain & Wrinkle-resistant
- Oil & Water-repellent
- Button down epaulettes
- Chest pocket (mitred corners)
- Pockets with bellowed pleats
- Pen access through flap
- Two-piece collar for a better fit
- Durable top-stitched seams
- Rounded two-button adjustable cuff
- Fused front placket, collar & cuffs
- Spare button & Name tag label



Fabric: 65% Polyester / 35% Cotton Poplin
Weight: 120gsm



| Sizes & Colours Available | | | |
|---------------------------|-------|-------|----------|
| | White | Black | Sky Blue |
| Collar Size (inches) | 14.5 | 14.5 | 14.5 |
| | 15 | 15 | 15 |
| | 15.5 | 15.5 | 15.5 |
| | 16 | 16 | 16 |
| | 16.5 | 16.5 | 16.5 |
| | 17 | 17 | 17 |
| | 17.5 | 17.5 | 17.5 |
| | 18 | 18 | 18 |
| | 18.5 | 18.5 | 18.5 |
| | 19 | 19 | 19 |
| | 19.5 | 19.5 | 19.5 |
| | 20 | 20 | 20 |
| | 21 | | 21 |

Men’s Pilot Shirt Short Sleeve (Regular fit)

Product no: NSHA04

- Teflon Coated & Non-Iron
- Stain & Wrinkle-resistant
- Oil & Water-repellent
- Two-piece collar for a better fit
- Durable top-stitched seams
- Fused front placket & collar
- Spare button & Name tag label
- Button down epaulettes
- Chest pocket (mitred corners)
- Pockets with bellowed pleats
- Pen access through flap



Fabric: 65% Polyester / 35% Cotton Poplin
Weight: 120gsm



| Sizes & Colours Available | | | |
|---------------------------|-------|-------|----------|
| | White | Black | Sky Blue |
| Collar Size (inches) | 14.5 | 14.5 | 14.5 |
| | 15 | 15 | 15 |
| | 15.5 | 15.5 | 15.5 |
| | 16 | 16 | 16 |
| | 16.5 | 16.5 | 16.5 |
| | 17 | 17 | 17 |
| | 17.5 | 17.5 | 17.5 |

Men’s Pilot Shirt Short Sleeve (Tailored fit)

Product no: NSHA04T

- Teflon Coated & Non-Iron
- Stain & Wrinkle-resistant
- Oil & Water-repellent
- Two-piece collar for a better fit
- Durable top-stitched seams
- Fused front placket & collar
- Spare button & Name tag label
- Button down epaulettes
- Chest pocket (mitred corners)
- Pockets with bellowed pleats
- Pen access through flap



Fabric: 65% Polyester / 35% Cotton Poplin
Weight: 120gsm





Sizes & Colours Available

| | White | Black | Sky |
|----------------|-------|-------|-----|
| UK Ladies Size | 8 | 8 | 8 |
| | 10 | 10 | 10 |
| | 12 | 12 | 12 |
| | 14 | 14 | 14 |
| | 16 | 16 | 16 |
| | 18 | 18 | 18 |
| | 20 | 20 | 20 |

Ladies Pilot Shirt Long Sleeve (Shaped Fit)

- Teflon Coated & Non-Iron
- Stain & Wrinkle-resistant
- Oil & Water-repellent
- Two-piece collar for a better fit
- Durable top-stitched seams
- Fused front placket, collar & cuffs
- Chest Pockets with Pen access
- Rounded two-button adjustable cuff
- Button down epaulettes
- Mitred corners on pockets
- Pockets with bellowed pleats
- Spare button & Name tag label



Product no: NSHL03

Fabric: 65% Polyester / 35% Cotton Poplin
Weight: 120gsm



Sizes & Colours Available

| | White | Black | Sky |
|----------------|-------|-------|-----|
| UK Ladies Size | 8 | 8 | 8 |
| | 10 | 10 | 10 |
| | 12 | 12 | 12 |
| | 14 | 14 | 14 |
| | 16 | 16 | 16 |
| | 18 | 18 | 18 |
| | 20 | 20 | 20 |

Ladies Pilot Shirt Short Sleeve (Shaped Fit)

- Teflon Coated & Non-Iron
- Stain & Wrinkle-resistant
- Oil & Water-repellent
- Two-piece collar for a better fit
- Durable top-stitched seams
- Fused front placket & collar
- Chest Pockets with Pen access
- Button down epaulettes
- Mitred corners on pockets
- Pockets with bellowed pleats
- Spare button & Name tag label



Product no: NSHL04

Fabric: 65% Polyester / 35% Cotton Poplin
Weight: 120gsm



Trading since **1972**, CKL is one of the **UK's most established** Clothing Importers, Manufacturers and Wholesale Suppliers of **Workwear/PPE, Sportswear, Schoolwear** and **Promotional wear**.

Our warehouse in Glasgow covers **50,000** ft² over four floors, holding thousands of products from over 100 well known brands.



PERSONALISED TO EACH NEED



PRINT &
EMBROIDERY
SERVICES
AVAILABLE

BUY DIRECT
WHOLESALE PRICES
FOR **BULK BUYERS**

Please contact us on
0800 788 0777

FOR FULL RANGE OF OUR
PRODUCTS PLEASE VISIT OUR
WEBSITE **CKL.UK.COM**



WORKWEAR
& PPE



CHEFS
WEAR



SPORTS
WEAR



DANCEWEAR



SCHOOL
UNIFORMS

WORK • CORPORATE • SPORTS • FOOTWEAR • CHEFS WEAR
PPE • OUTDOOR • ACCESSORIES • SCHOOL • LEISURE • DANCEWEAR



CKL CAN PROVIDE YOU WITH TOP QUALITY ITEMS AT WHOLESALE PRICES.
Alternatively, if you would like to receive one of our brochures or speak to any of our friendly, experienced staff, please contact us on

sales@ckl.uk.com or **0800 788 0777**

**DON'T LET LIFE'S MISHAPS
RUIN YOUR DAY**

NOMA

Nano-Tech Fabric • Stain Resistant

Exclusively available from



Tel (Free): +44 (0)800 788 0777

Email: sales@ckl.uk.com

Web: www.ckl.uk.com



nano-TECH
Fibre Coating

